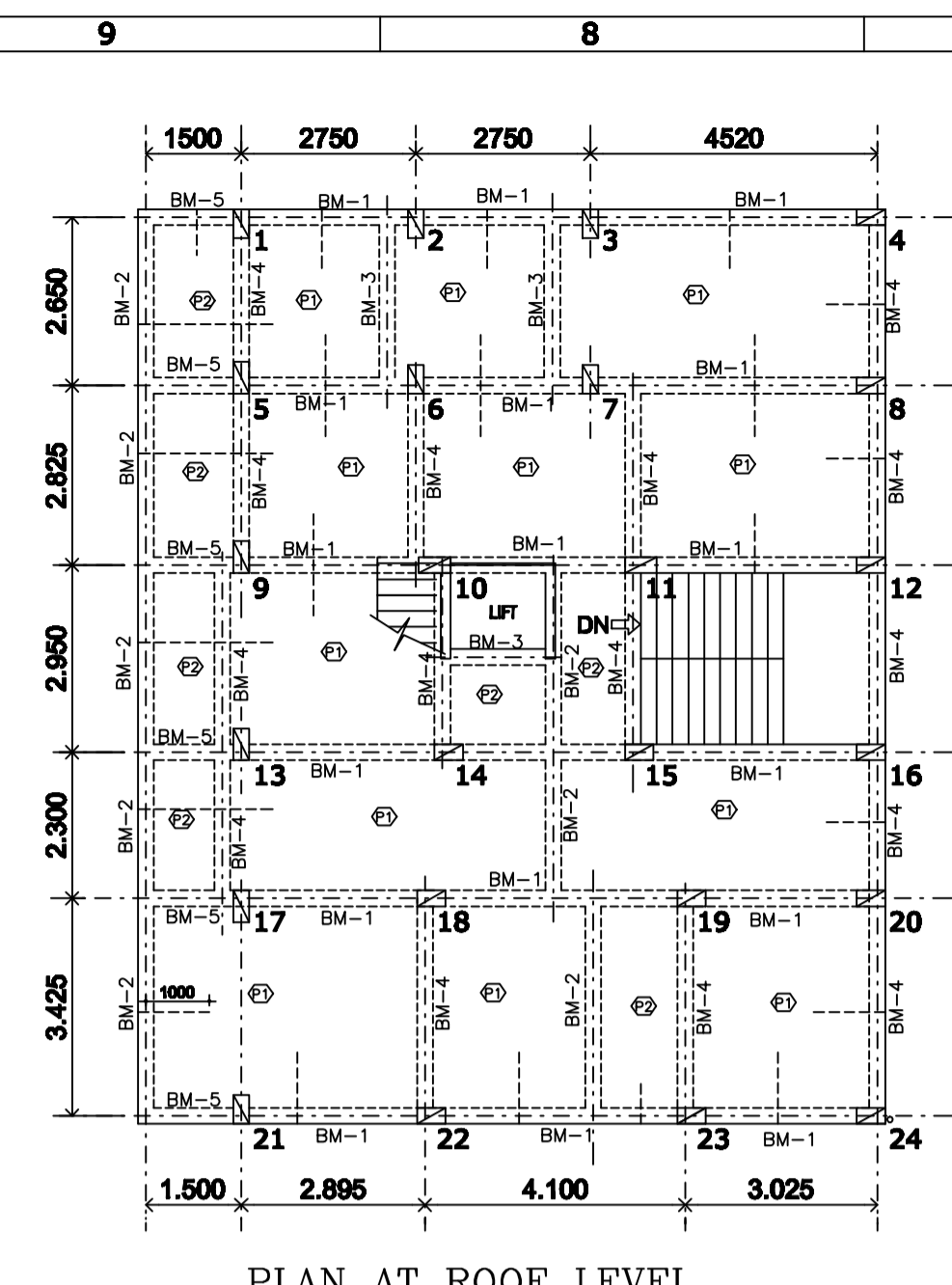
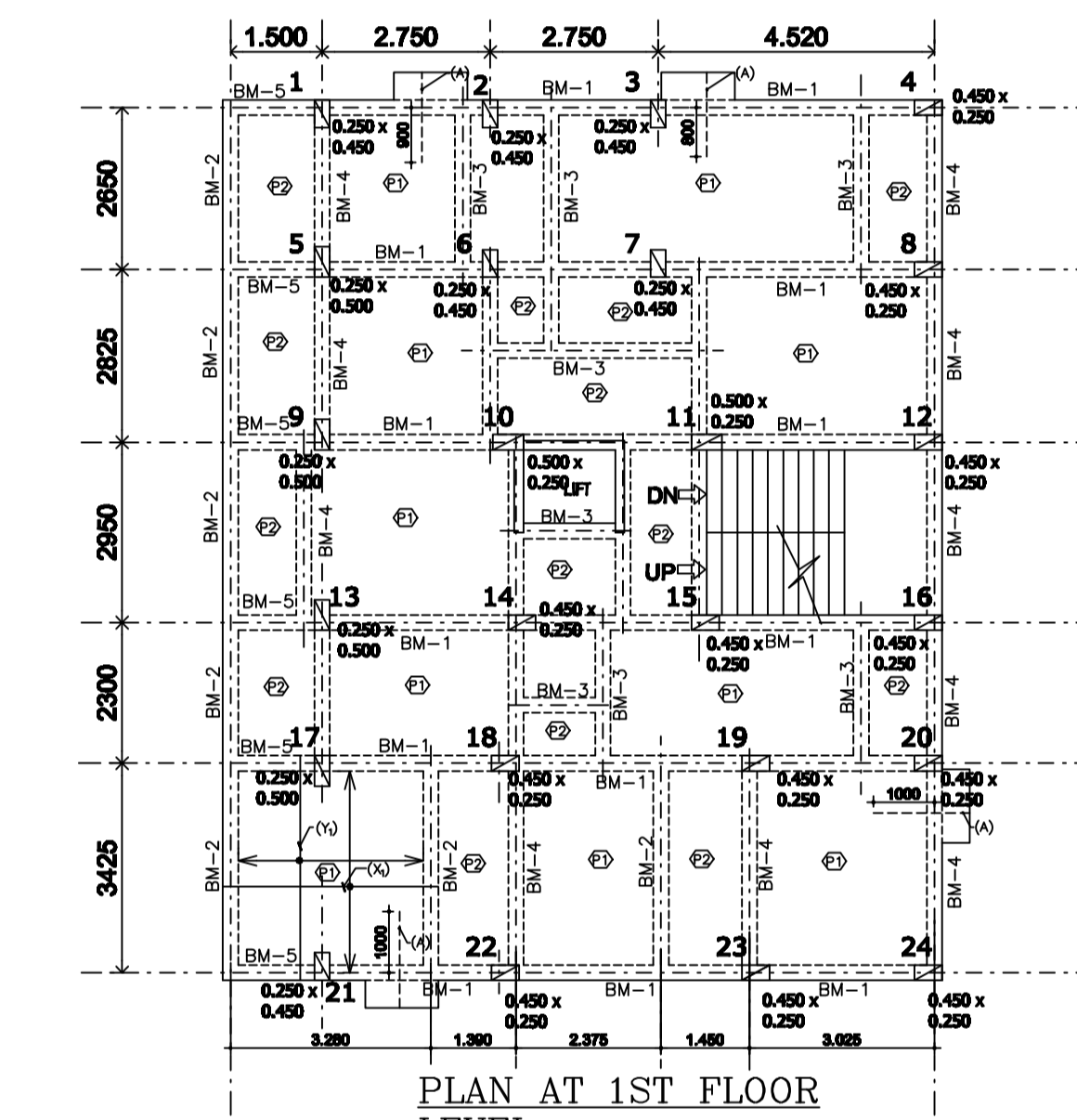


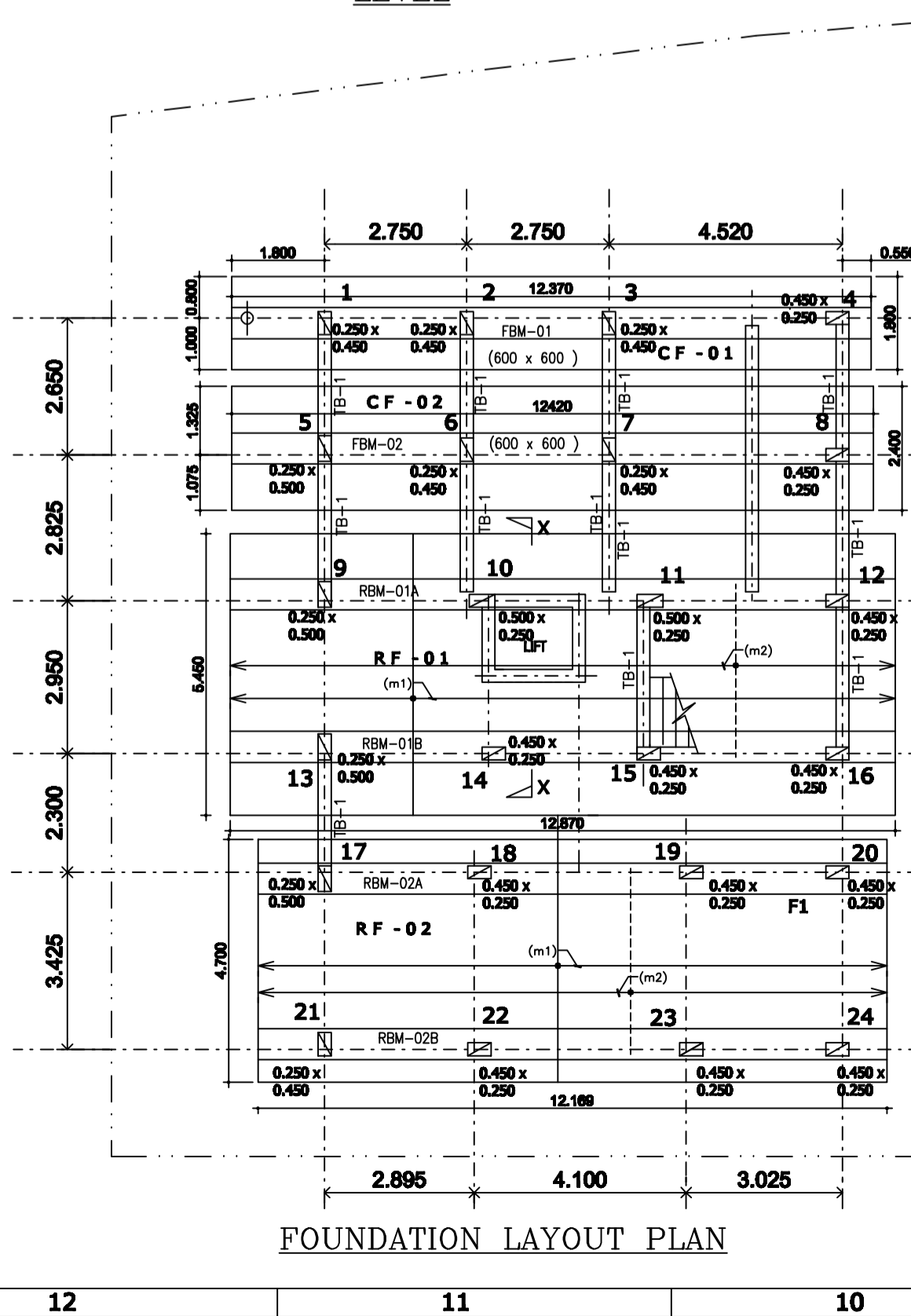
PLAN AT 2ND, 3RD, 4TH FLOOR LEVEL



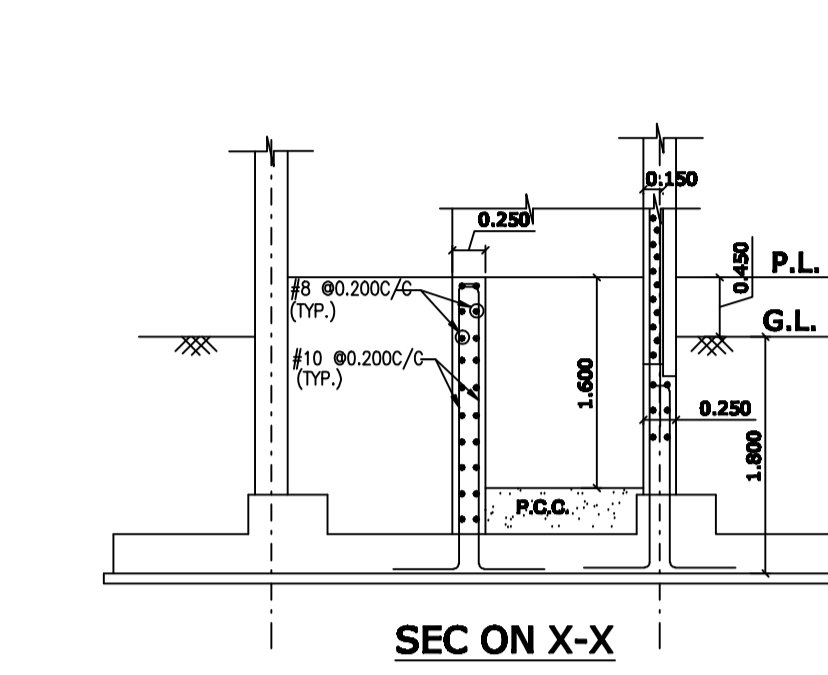
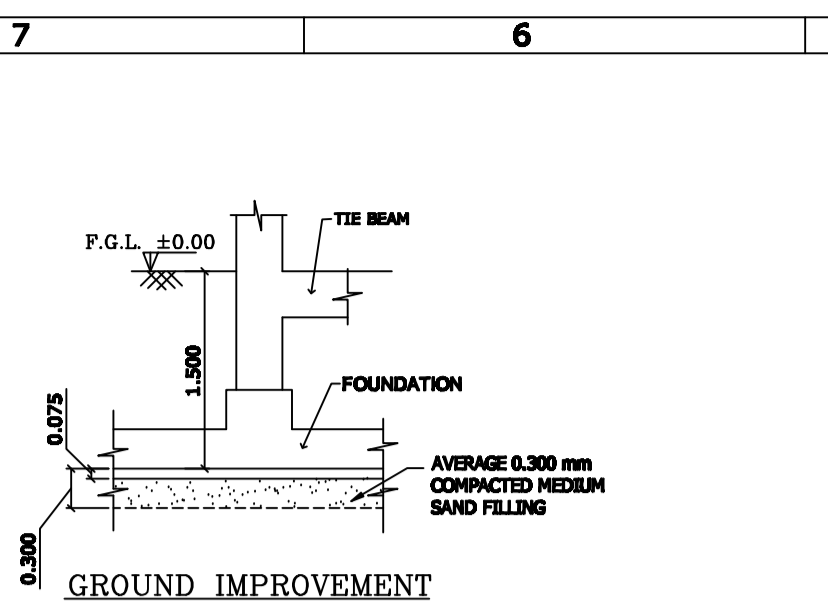
PLAN AT ROOF LEVEL



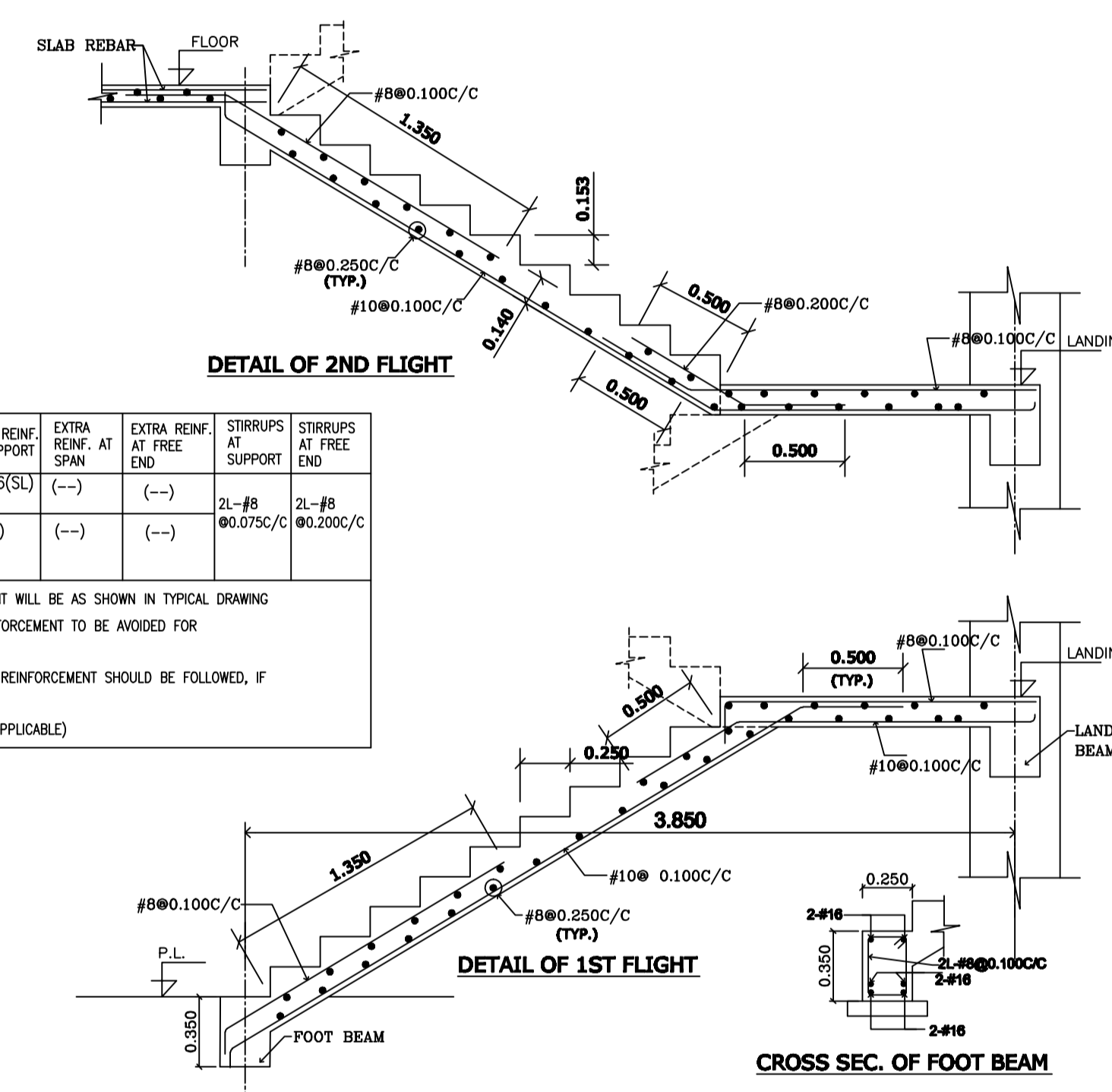
PLAN AT 1ST FLOOR LEVEL



FOUNDATION LAYOUT PLAN



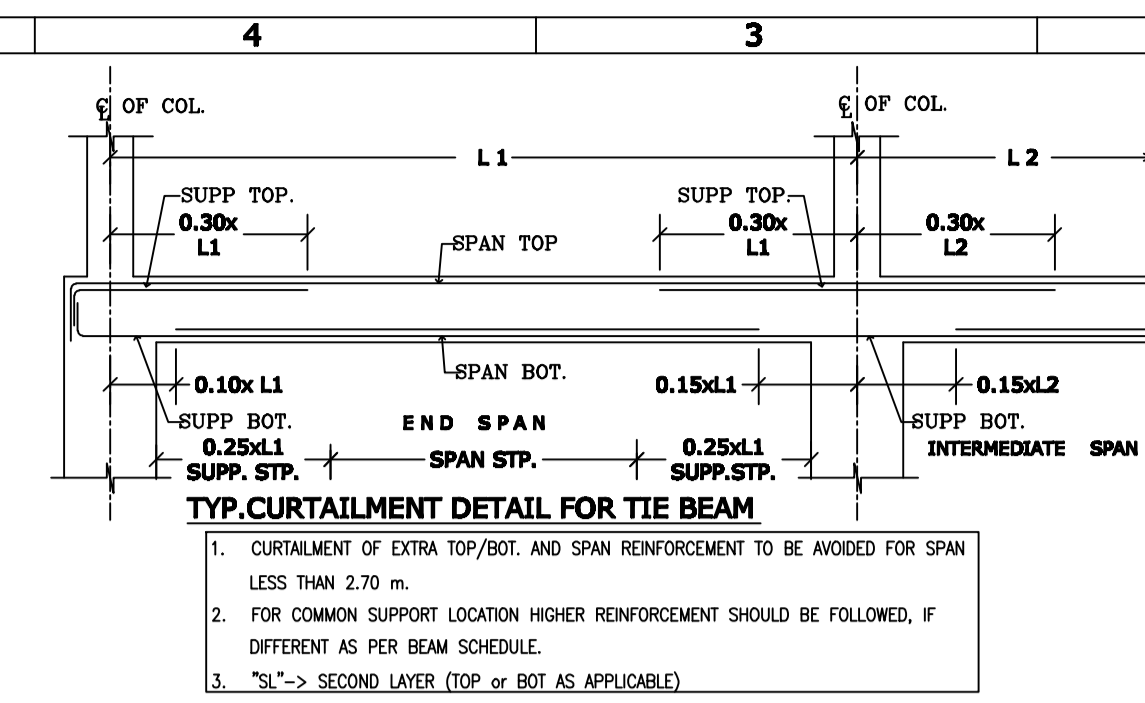
SEC ON X-X



DETAIL OF 2ND FLIGHT

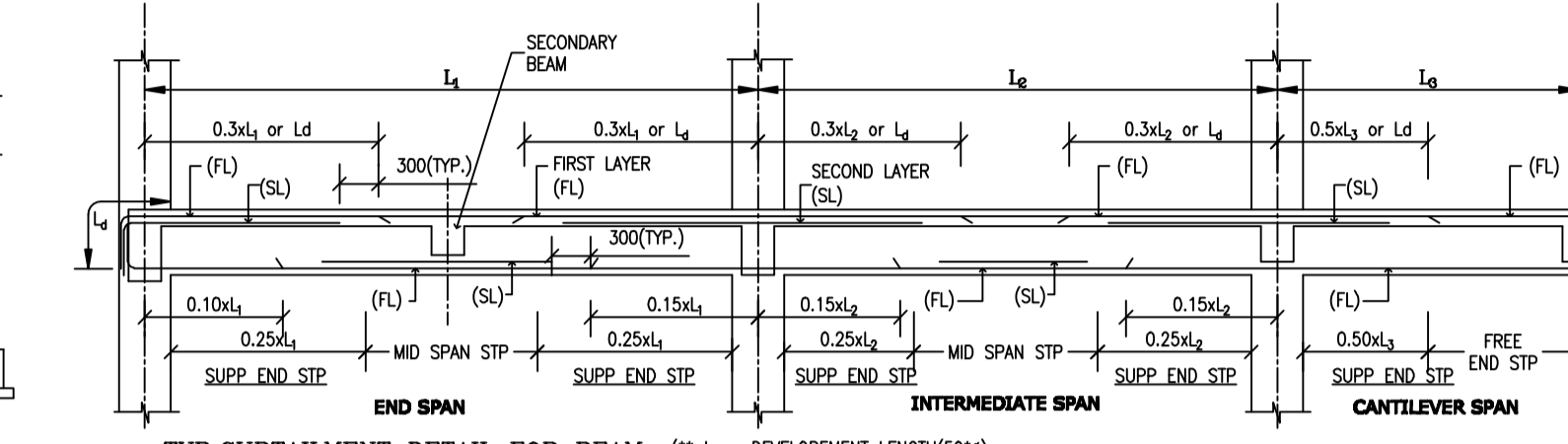
DETAIL OF 1ST FLIGHT

CROSS SEC. OF FOOT BEAM

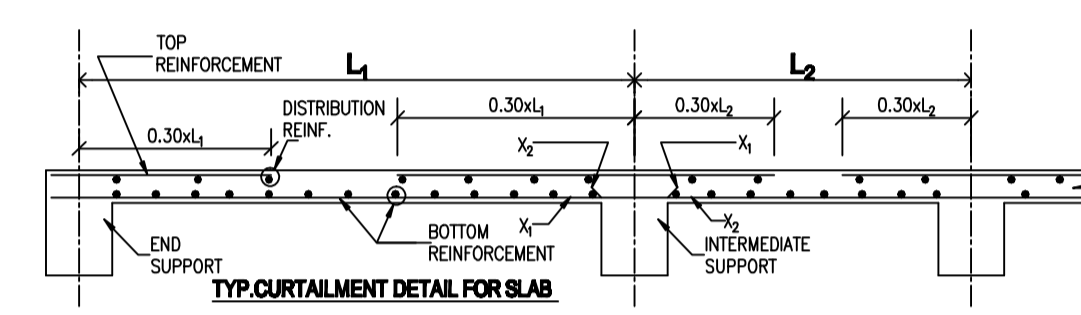


TYP. CURTAILMENT DETAIL FOR TIE BEAM

1. CURTAILMENT OF EXTRA TOP/BOT. AND SPAN REINFORCEMENT TO BE AVOIDED FOR SPAN LESS THAN 2.70 m.
2. FOR COMMON SUPPORT LOCATION HIGHER REINFORCEMENT SHOULD BE FOLLOWED, IF DIFFERENT AS PER BEAM SCHEDULE.
3. "SL" -> SECOND LAYER (TOP OR BOT AS APPLICABLE)



TYP. CURTAILMENT DETAIL FOR BEAM (\*L<sub>d</sub> = DEVELOPMENT LENGTH(S<sub>d</sub>), WHERE # = DIA OF BAR USED)



SECTION ALONG SHORTER DIRECTION

- NOTES :-**
1. THIS DRAWING SHOULD BE READ IN ARCHITECTURAL DRAWINGS.
  2. ALL DIMENSIONS ARE IN "mm" UNLESS OTHERWISE MENTIONED.
  3. GRADE OF CONCRETE FOR R.C.C. IS M20.
  4. COVER TO MAIN REINFORCEMENT --(a) FOUNDATION SLAB / BEAM - 50mm, (b) TIE BEAM - 50mm, (c) COL. - 40mm, (d) FLOOR BEAM - 30mm & (e) FLOOR SLAB - 20mm.
  5. THE REINFORCEMENT SHALL BE OF HIGH YIELD STRENGTH DEFORMED BARS OF GRADE Fe 5000 CONFORMING TO IS:1786-2008
  6. DEVELOPMENT LENGTH (L<sub>d</sub>) OF REINFORCEMENT SHALL BE 50 TIMES THE BAR DIAMETER.
  7. SPACING OF STIRRUP / HOOPS SHALL BE PROVIDED AS PER IS: 13920 - 2016 FOR DUCTILE DETAILING REQUIREMENT.
  8. NOT MORE THAN 50% OF THE BARS SHALL BE SPLUCED AT ONE SECTION.

**SCHEDULE OF BOTTOM SLAB REIN.**

PANEL MARKED	OVER ALL DIM. (mm)	BAR DIAMETER	BAR & SPACING
1	1.500 x 2.850	Ø125	(X) #8@0.150C/C
2	2.750 x 2.850	Ø125	(Y) #8@0.150C/C
3	2.750 x 2.850	Ø125	(X) #8@0.175C/C
4	4.520 x 2.850	Ø125	(Y) #8@0.175C/C

**SCHEDULE OF TOP SLAB REIN.**

BAR MARKED	DIAMETER	BAR & SPACING
(A)	Ø80.100C/C	

- NOTES:-**
1. ALL OTHERS TOP REIN. ACROSS THE SUPPORT WILL BE #8@0.150C/C OVER INTERMEDIATE SUPPORT AND #8@0.200C/C FOR END SUPPORT.
  2. TOP BARS WILL BE EXTENDED FROM C/L OF SUPPORT UP TO A DISTANCE EQUAL TO 0.3 x SHORTER SPAN ON EITHER SIDE / ONE SIDE OF SUPPORT AS APPLICABLE UNLESS SPECIFIED IN PLAN.
  3. DISTRIBUTION BARS ARE #8 @0.200C/C

**SCHEDULE OF CANTILEVER FLOOR BEAMS**

BEAM MKD	WIDTH x DEPTH (FWxD)	ALL THROUGH REIN.	EXTRA REIN. AT SUPPORT	EXTRA REIN. AT SPAN	EXTRA REIN. AT FREE END	STIRRUPS AT SUPPORT	STIRRUPS AT FREE END
BM-5	0.250 x 0.350	TOP 3-#16 BOT. 3-#16	3-#16(SL)	(-)	(-)	2L-#8 Ø0.075C/C	2L-#8 Ø0.200C/C

1. CURTAILMENT DETAILS BEAM REINFORCEMENT WILL BE AS SHOWN IN TYPICAL DRAWING & CURTAILMENT OF EXTRA TOP/BOT. REINFORCEMENT TO BE AVOIDED FOR CANTILEVER SPAN LESS THAN 1.50 m.
2. FOR COMMON SUPPORT LOCATION HIGHER REINFORCEMENT SHOULD BE FOLLOWED, IF DIFFERENT AS PER BEAM SCHEDULE.
3. "SL" -> SECOND LAYER (TOP OR BOT AS APPLICABLE)

**SCHEDULE OF TIE BEAMS**

BEAM MKD	WIDTH x DEPTH (FWxD)	ALL THROUGH REIN.	EXTRA REIN. AT INTERMEDIATE SUPPORT (LEFT OR RIGHT)	EXTRA REIN. AT MID SPAN	EXTRA REIN. AT END OR SPAN	STIRRUPS AT SUPPORT	STIRRUPS AT MID SPAN
TB-1	0.250 x 0.350	TOP 2-#16 BOT. 2-#16	2-#12(SL)	(-)	(-)	2L-#8 Ø0.075C/C	2L-#8 Ø0.150C/C

**SCHEDULE OF STRIP BEAM**

FEM. BEAM MKD	WIDTH (FW)	DEPTH (FD)	ALL THROUGH REIN.	EXTRA REIN. AT SUPPORT / CANTILEVER	EXTRA REIN. AT MID SPAN	STIRRUPS AT SUPPORT / CANTILEVER	STIRRUPS AT MID SPAN
FEM-01, FEM-02	0.600	0.600	TOP 5-#16 BOT. 5-#16	(-)	(-)	4L-#10 Ø0.150C/C	4L-#10 Ø0.300C/C
RBM-01A, RBM-01B, RBM-02A, RBM-02B	0.600	0.600	TOP 5-#16 BOT. 5-#16	(-)	(-)	4L-#10 Ø0.150C/C	4L-#10 Ø0.300C/C

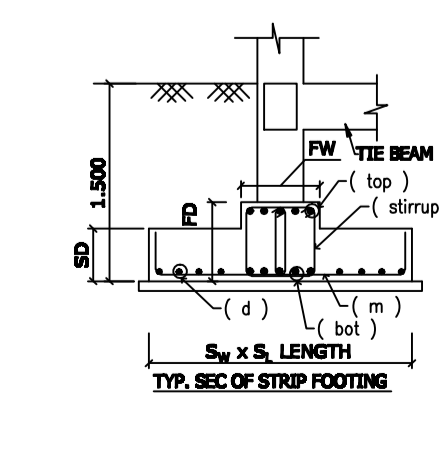
1. "SL" -> SECOND LAYER (TOP OR BOT AS APPLICABLE)

**SCHEDULE OF STRIP FOOTING**

FOOTING MKD	WIDTH (Sw)	LENGTH (Sl)	DEPTH OF FOOTING (Sd)	REINFORCEMENT OF FOOTING SLAB
CF-01	1.800	AS SHOWN	0.250	(m)- #12@0.200C/C, (d)- #10@0.250C/C
CF-2	2.400	AS SHOWN	0.250	(m)- #12@0.150C/C, (d)- #10@0.200C/C

**SCHEDULE OF RAFT FOOTINGS**

RAFT MKD	DEPTH OF FOOTING SLAB	REINFORCEMENT & SPACING
RF-01	0.300 mm	m1:- #12@0.125C/C(AT BOT) m2:- #10@0.150C/C(AT TOP) dist:- #10@0.250C/C (AT BOT & TOP)
RF-02	0.300 mm	m1:- #12@0.100C/C(AT BOT) m2:- #10@0.150C/C(AT TOP) dist:- #10@0.250C/C (AT BOT & TOP)



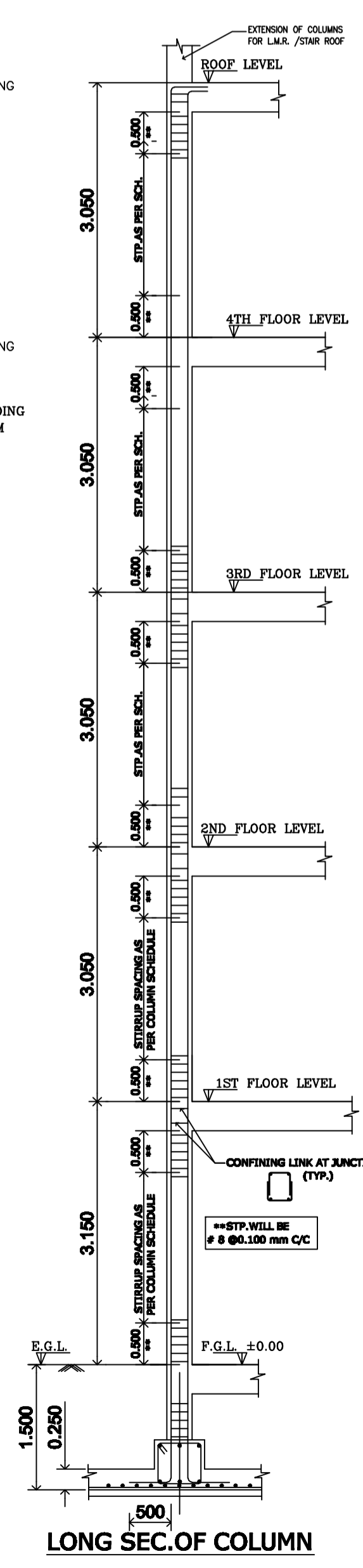
**SCHEDULE OF BEAMS AT FLOOR LEVEL**

BEAM MKD	WIDTH x DEPTH (FWxD)	ALL THROUGH REIN.	EXTRA REIN. AT INTERMEDIATE SUPPORT (LEFT OR RIGHT AS APPLICABLE)	EXTRA REIN. AT MID SPAN	EXTRA REIN. AT END SUPPORT (LEFT OR RIGHT AS APPLICABLE)	STIRRUPS AT SUPPORT	STIRRUPS AT MID SPAN
BM-2	0.250 x 0.300	TOP 2-#16 BOT. 2-#16	1-#16	(-)	(-)	2L-#8 Ø0.075C/C	2L-#8 Ø0.075C/C
BM-3	0.250 x 0.250	TOP 2-#16 BOT. 2-#16	1-#16	(-)	(-)	2L-#8 Ø0.075C/C	2L-#8 Ø0.075C/C

**SCHEDULE OF FLOOR & ROOF BEAMS**

BEAM MKD	WIDTH x DEPTH (FWxD)	ALL THROUGH REIN.	EXTRA REIN. AT LEFT SUPPORT	EXTRA REIN. AT MID SPAN	EXTRA REIN. AT RIGHT SUPPORT	STIRRUPS AT SUPPORT	STIRRUPS AT MID SPAN
BM-1	0.250 x 0.350	TOP 2-#16 BOT. 2-#16	1-#16 +3-#16(SL)	(-)	1-#16 +3-#16(SL)	2L-#8 Ø0.075C/C	2L-#8 Ø0.150C/C
BM-4	0.250 x 0.350	TOP 2-#16 BOT. 2-#16	1-#16 +2-#16(SL)	(-)	1-#16 +2-#16(SL)	2L-#8 Ø0.075C/C	2L-#8 Ø0.150C/C

1. CURTAILMENT DETAILS BEAM REINFORCEMENT WILL BE AS SHOWN IN TYPICAL DRAWING & CURTAILMENT OF EXTRA TOP/BOT. REINFORCEMENT TO BE AVOIDED FOR SPAN LESS THAN 2.70 m.
2. FOR COMMON SUPPORT LOCATION HIGHER REINFORCEMENT SHOULD BE FOLLOWED, IF DIFFERENT AS PER BEAM SCHEDULE.
3. "SL" -> SECOND LAYER (TOP OR BOT AS APPLICABLE)



LONG SEC. OF COLUMN

**SCHEDULE OF COLUMN**

COLUMN MARKED	DIAMETER	REINFORCEMENT
4, 12, 16, 21, 22, 23, 24	0.250 x 0.450	4-#16 +2-#12 Ø2000
1, 2, 3, 6, 7, 8, 14, 15, 16, 19, 20	0.250 x 0.450	8-#16 +2-#12 Ø2000
10, 17	0.250 x 0.500	10-#16 Ø2000
5, 9, 11, 13	0.250 x 0.500	4-#20 +6-#16 Ø2000

**PLAN OF PROPOSED G+4 STORIED RESIDENTIAL & COMMERCIAL BUILDING PLAN AT AT R.S. DAG NO-532 & 533,L.R. DAG NO- 620, R.S.KHATIAN NO-244 & 266, J.R. KHATIAN NO-2765&2766,MOUZA-JAGANNATHPUR,J.L. NO-51, WARD NO-08, HOLDING NO-731(KUSUMBA), P.S.-NARENDRAPUR(OLD-SONARPUR), UNDER RAJPUR SONARPUR MUNICIPALITY**

**STARWOOD REAL ESTATE AS CONSTITUTED ATTORNEY OF, SHYAM SUNDAR DAS & LATIKA DAS**

**SIGN OF OWNER'S**

**BHASKAR JYOTI ROY B.C.E., M.I.E., M.I.G.S. CHARTERED ENGINEER Empanelment No. - G.T./120 (R.S.M.)**

**GEO-TECHNICAL ENGG.**

**JIT CHAKRABORTY E. S. E. [CLASS - II] LICENSE NO.- 95 CONT:- 9163939883**

**STRUCTURAL ENGG.**

